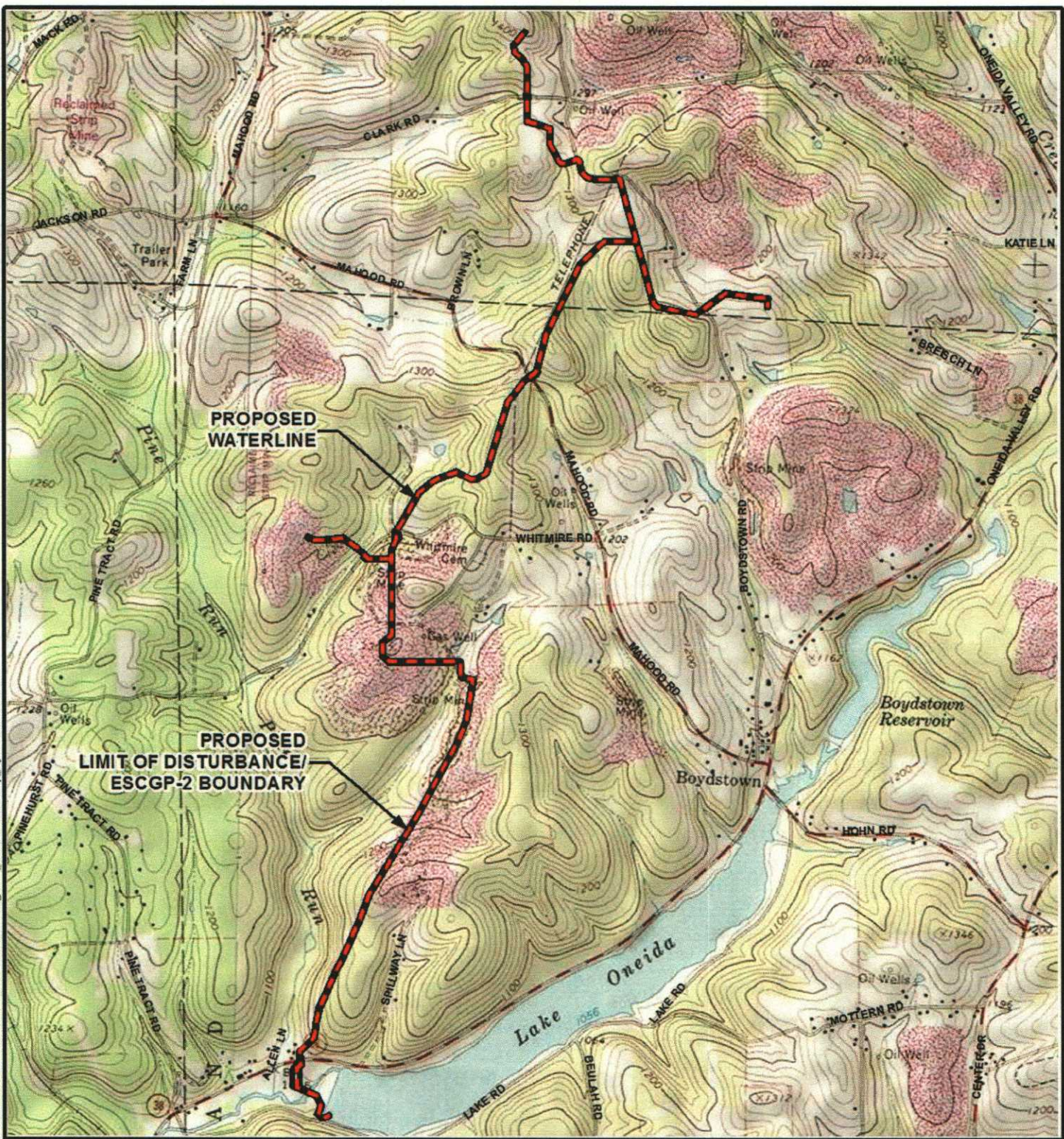
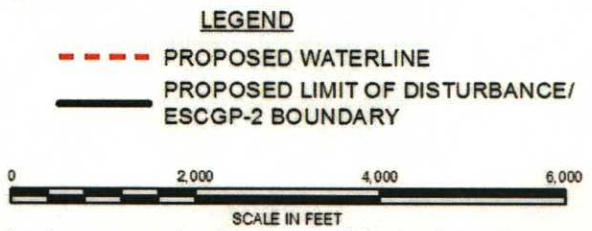


C:\MU\arc\ar\ar\ar\Dropbox\GISDATA\A\ Project\sk\PTT\SHURCH\2012\104\Phase 1\Task 18.8\Waterline\Figure 1 Site Location Map Hydra Waterline.mxd



REF: Base map from ESRI USA Topo Maps. Refer to USGS 7.5 minute Quads Mount Chestnut, PA and East Butler, PA.



This drawing, its contents, and each component of this drawing are the property of and proprietary to ARM Group Inc. and shall not be reproduced or used in any manner except for the purpose identified on the Title Block, and only by or on behalf of this client for the identified project unless otherwise authorized by the express, written consent of ARM Group Inc.

Site Location Map

Hydra Waterline
 EM Energy Pennsylvania, LLC
 Concord and Oakland Townships,
 Butler County, Pennsylvania

August 2013 Scale: 1" = 2,000' C12104-1-18.8



ARM Group Inc.
 Earth Resource Engineers
 and Consultants
 www.armgroup.net

Figure
1